



UWD-1

Utility / Weapons Drawer Instructions

Thank you for purchasing our Utility Drawer / CargoRAXX Combo. See attached assembly and installation instructions. Please attach the steel drawer brackets (**1 SIDE LOOSE/SNUG, THE OTHER TIGHT**) underneath the deck before inserting into vehicle. Do not attach the side brackets until the rack is in the vehicle – if you have an electronics box in a Ford PIU or Durango, rear brackets are not included (install the rack on top of the box through the holes on top). Do not attach the flare boxes until after the tray is fully installed. Once tray is in vehicle with all the brackets attached, drill through the 4 hole locations in the paneling before drilling the larger 13/32" hole. Please reach out with any questions – I enclosed my card and my cell is 732-708-0077.

Best,

Roman Lesko
CargoRAXX

Thank you!
Roman Lesko



UWD-1 UTILITY/WEAPONS DRAWER ASSEMBLY GUIDE



Questions or Feedback: Call 1-844-867-7299 or
Email sales@cargoraxx.com

UWD-1 HARDWARE

6x - 1/4-20 X 5/8 BUTTON SOC CAP SCREW STEEL ZINC



6x - 1/4-20 NYLON LOCK NUTS



2x KEYS

RIGHT STEEL DRAWER BRACKET

FRONT

MAKE SURE BALL BEARING BRACKET AS FORWARD AS POSSIBLE BEFORE
ADDING DRAWER

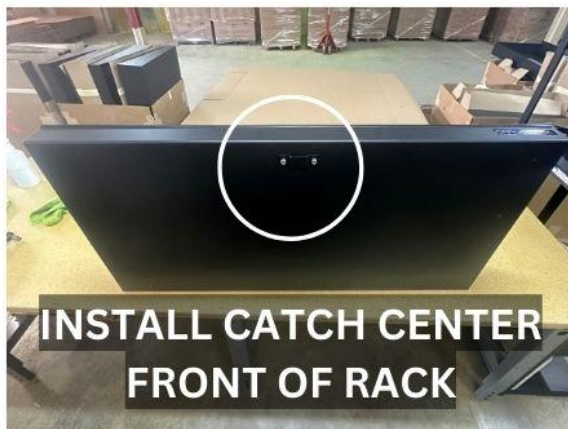
FRONT

LEFT STEEL DRAWER BRACKET

Questions or Feedback: Call 1-844-867-7299 or
Email sales@cargoraxx.com



DRAWER CATCH INSTALLATION



**INSERT BOLT INSIDE RACK AND
LOCKNUTS UNDERNEATH**



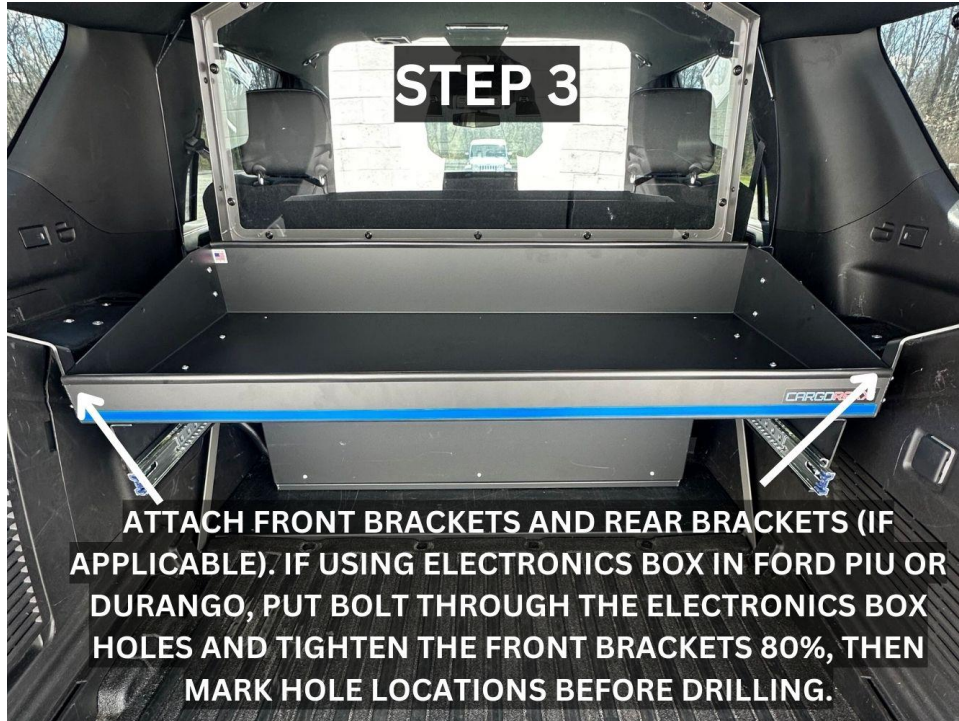
STEP 1

ATTACH BRACKETS UNDER RACK (ONE LOSE, ONE TIGHT)

MAKE SURE BALL BEARING BRACKET AS FORWARD
AS POSSIBLE BEFORE ADDING DRAWER

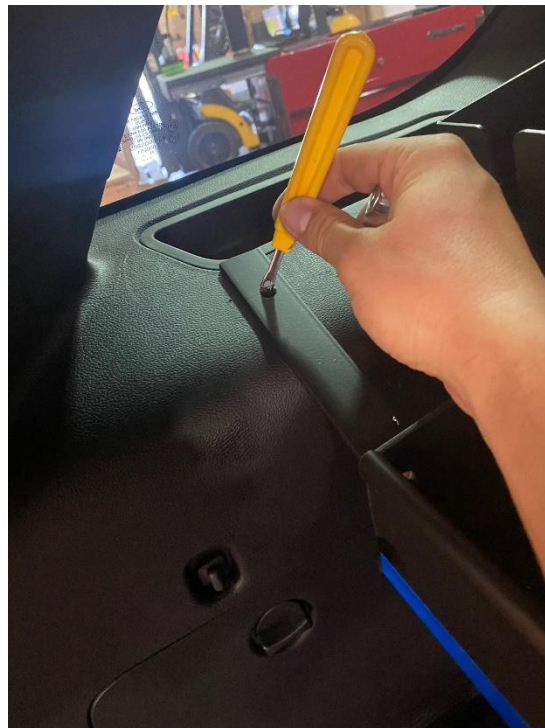
**ATTACH ONE BRACKET LOSE/SNUG, THE OTHER TIGHT
BEFORE ADDING DRAWER IN VEHICLE. THEN TIGHTEN
WHEN FULLY INSTALLED.**





STEP 4

Scribe all the hole locations or drill a 1/4" hole before moving unit and drilling a larger 13/32" hole.



Questions or Feedback: Call 1-844-867-7299 or
Email sales@cargoraxx.com

STEP 5

Drill a 13/32" hole into the paneling (create a smaller pilot hole first for more precise location).



STEP 6

Fasten rivnut onto 1-1/2" bolt using friction wrench.



STEP 7

Press the rivet into the hole in the panel and drill the bolt tightly while the rivet is inside the panel and friction wrench is pressed down on rivet insert. This will cause the rivet to collapse and leave a threaded insert. Then remove the bolt with the drill and you are left with the insert. DO THIS STEP ON THE BATTERY PANEL WHILE OFF THE BATTERY TO NOT PUNCTURE BATTERY COVER.



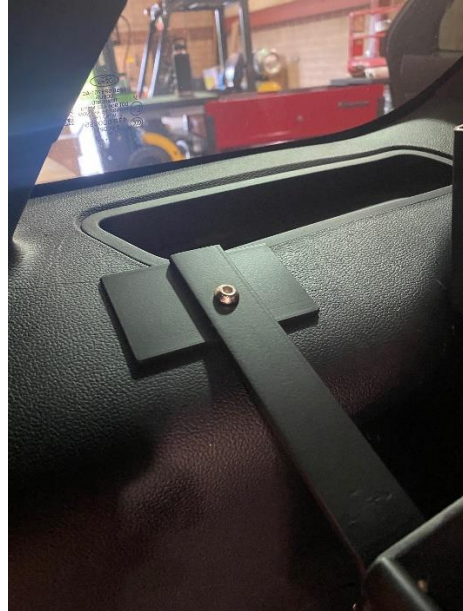
Questions or Feedback: Call 1-844-867-7299 or
Email sales@cargoraxx.com

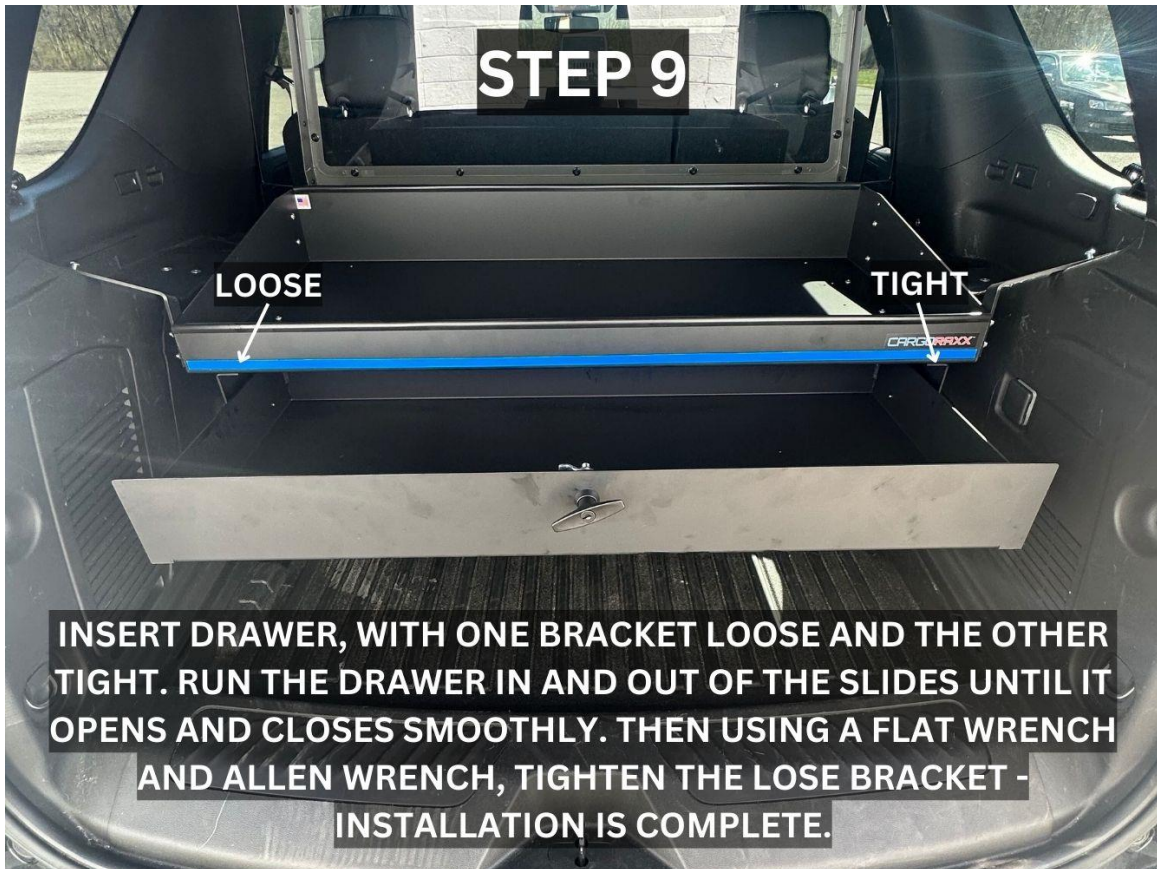
STEP 8

Once you have all the 4 rivet inserts secured, realign tray and tighten $\frac{3}{4}$ " bolts through the legs into the rivnuts. Installation is complete.



Jacknut fully installed





STEP 10

Insert rubber mat – glossy side up



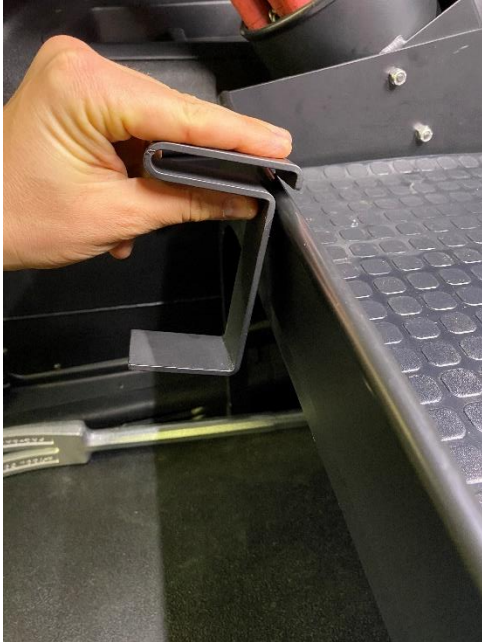
Questions or Feedback: Call 1-844-867-7299 or
Email sales@cargoraxx.com

Flare Box Installation

Attach flare box using black oxide screws and lock nuts.



Caution Tape Holder Installation



1 – Face caution tape holder down



2 – Snap the bend over the trim



3 – Press down with thumb to the final position as bend goes over the lip of the tray

Questions or Feedback: Call 1-844-867-7299 or
Email sales@cargoraxx.com

Halligan Mount Installation

