

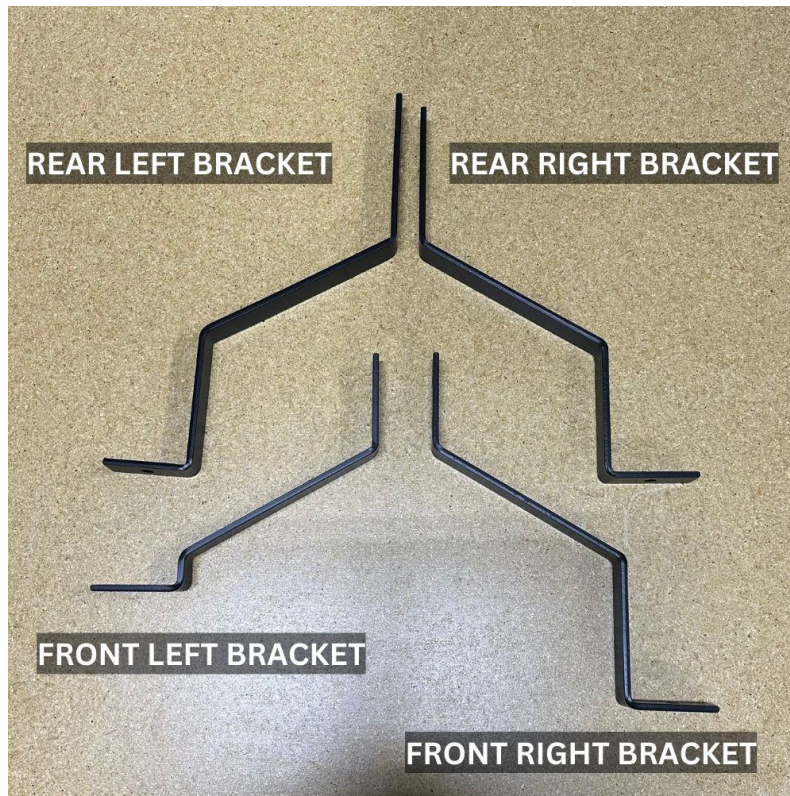


## S3E (2020-2024 Ford Expedition) ASSEMBLY GUIDE



Questions or Feedback: Call 1-844-867-7299 or  
Email [sales@cargoraxx.com](mailto:sales@cargoraxx.com)

# Hardware Guide



## HARDWARE

12x BOLTS – 1/4-20 X 3/4" BUTTON SOC CAP SCREW ZINC PLATED

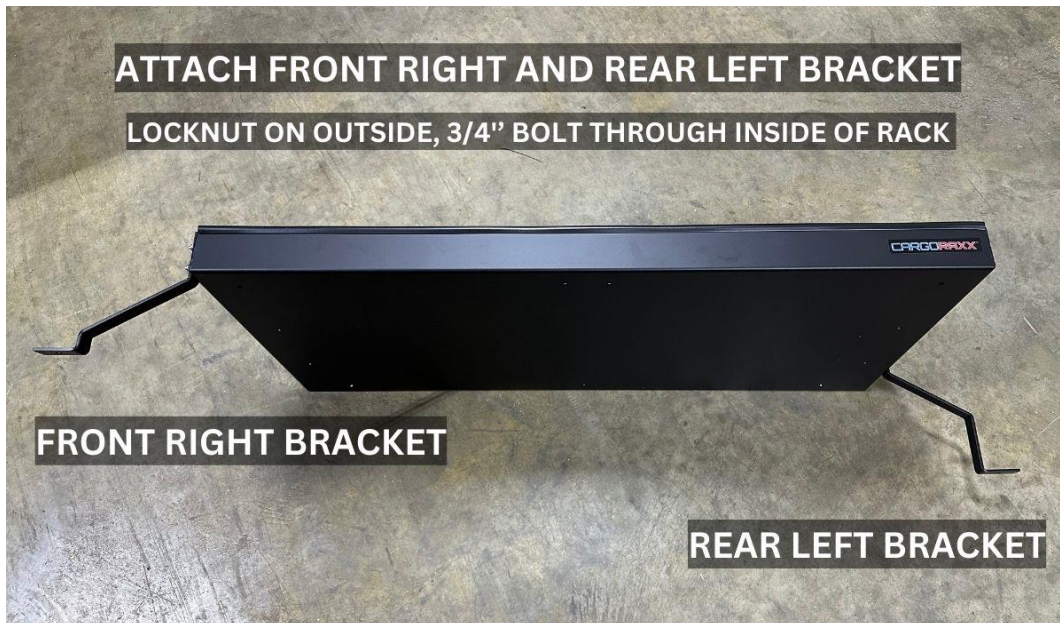
8x LOCK NUTS - 1/4-20 NYLON STAINLESS STEEL LOCK NUTS

4x NUTSERTS: POP 8SJN (310040) Jacknut (Molly) Insert; 1/4-20 UNC-2B, (0.015 - 0.187 Inch Grip), Large Flange H

## STEP 1

Attach the front left bracket and the rear right bracket to the tray as seen below using the 3/4" bolts and lock nuts. Secure the locknuts on the outside of the rack.

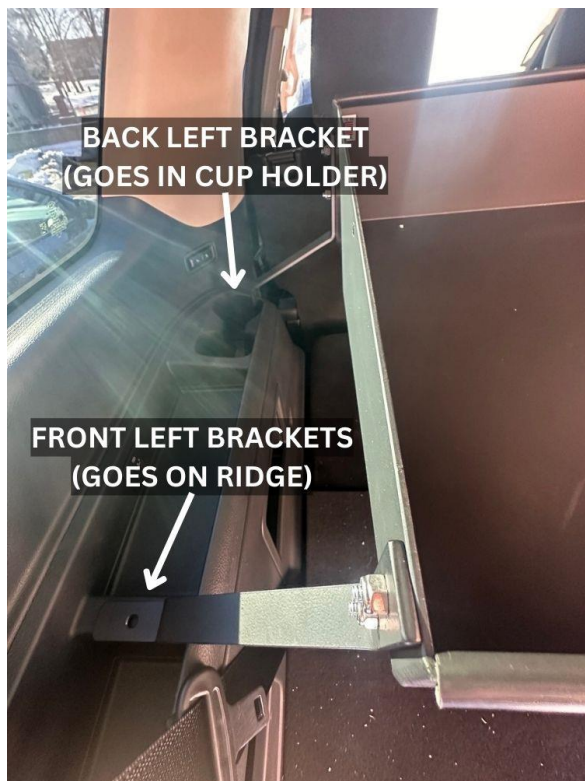
**Do not install flare boxes until the unit is hard-mounted in the car.**





## STEP 2

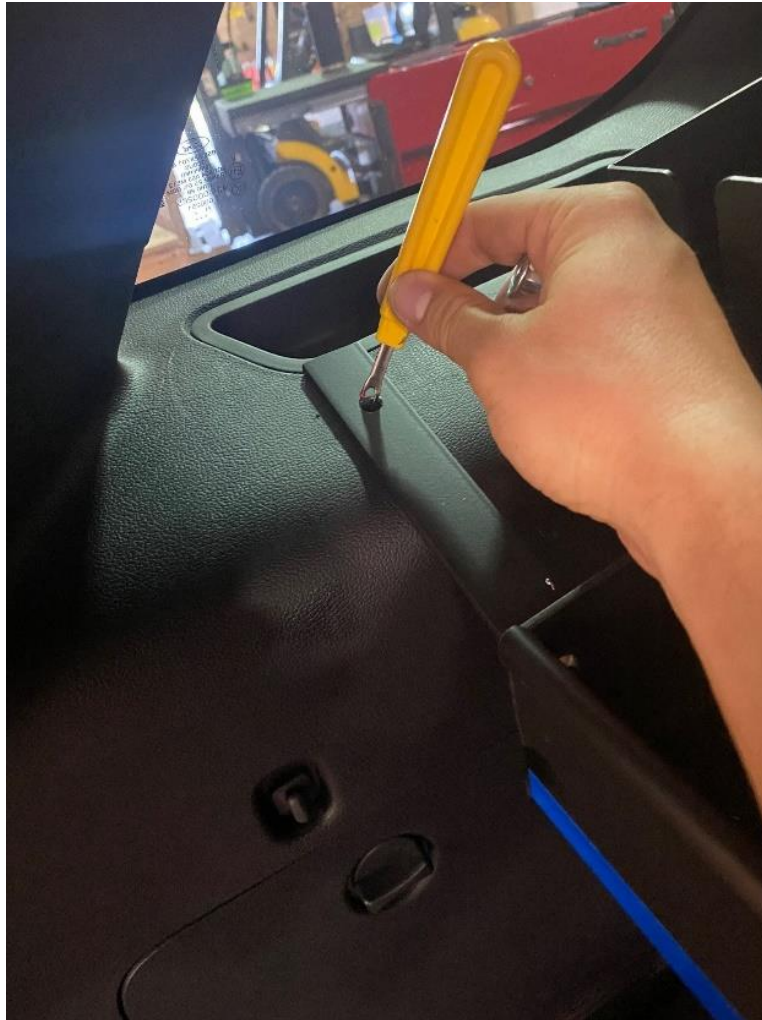
Insert tray into vehicle carefully to not scratch panel or damage windows (please do not attach flare boxes until brackets are secured into vehicle). Attach the other two brackets inside the vehicle.



Questions or Feedback: Call 1-844-867-7299 or  
Email [sales@cargoraxx.com](mailto:sales@cargoraxx.com)

## STEP 3

Scribe all the hole locations or drill a  $\frac{1}{4}$ " hole before moving unit and drilling a larger  $\frac{13}{32}$ " hole.



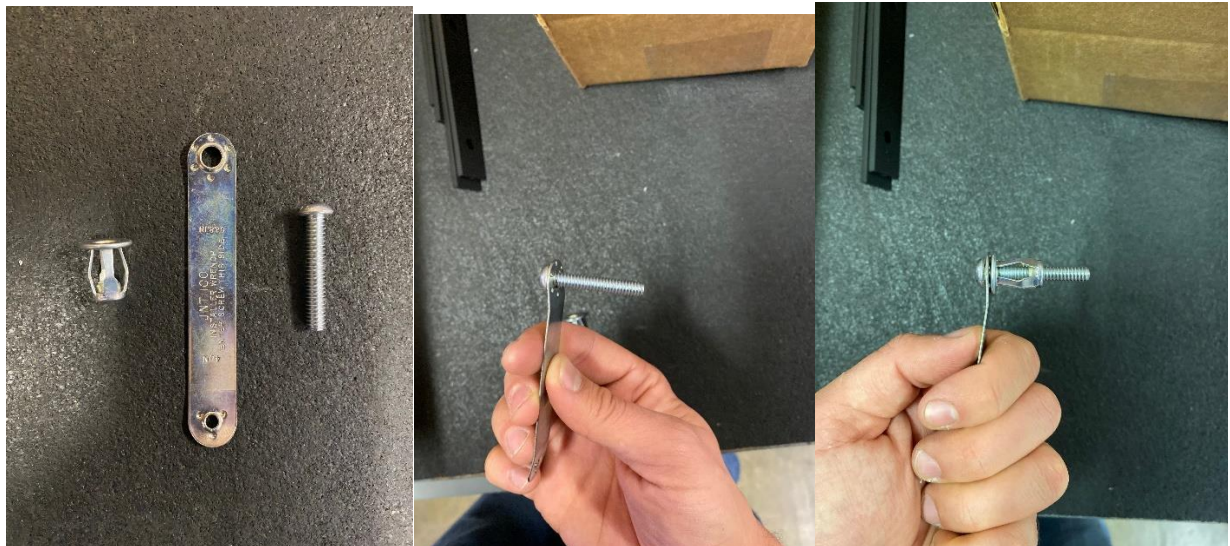
## STEP 4

Drill a 13/32" hole into the paneling (create a smaller pilot hole first for more precise location).



## STEP 5

Fasten rivnut onto 1-1/2" bolt using friction wrench.





## STEP 6

Press the rivet into the hole in the panel and drill the bolt tightly while the rivet is inside the panel and friction wrench is pressed down on rivet insert. This will cause the rivet to collapse and leave a threaded insert. Then remove the bolt with the drill and you are left with the insert. DO THIS STEP ON THE BATTERY PANEL WHILE OFF THE BATTERY TO NOT PUNCTURE BATTERY COVER.



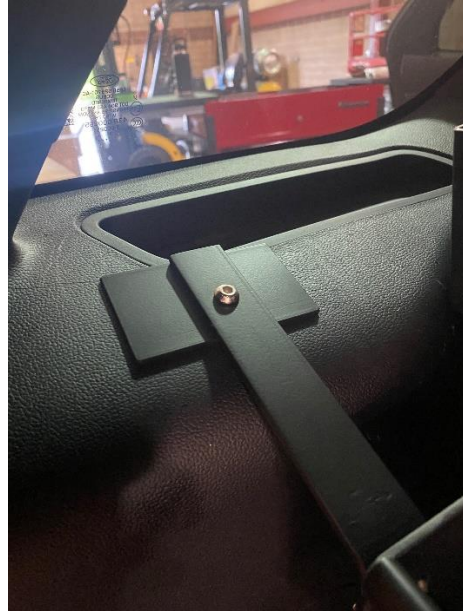
Questions or Feedback: Call 1-844-867-7299 or  
Email [sales@cargoraxx.com](mailto:sales@cargoraxx.com)

## STEP 7

Once you have all the 4 rivet inserts secured, realign tray and tighten  $\frac{3}{4}$ " bolts through the legs into the rivnuts. Installation is complete.



Nutsert fully installed



## STEP 8

Insert rubber mat – glossy side up



Questions or Feedback: Call 1-844-867-7299 or  
Email [sales@cargoraxx.com](mailto:sales@cargoraxx.com)



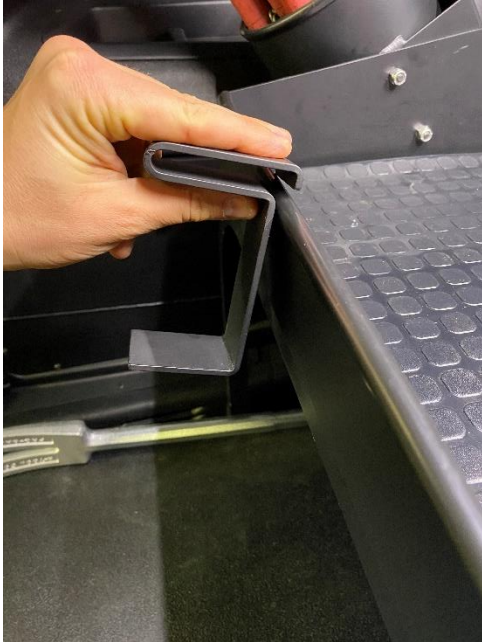
## Flare Box Installation

Attach flare box using black oxide screws and lock nuts.



Questions or Feedback: Call 1-844-867-7299 or  
Email [sales@cargoraxx.com](mailto:sales@cargoraxx.com)

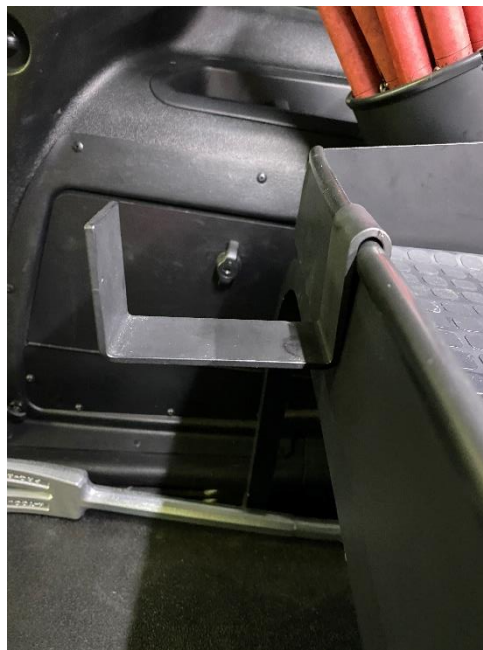
## Caution Tape Holder Installation



1 – Face caution tape holder down



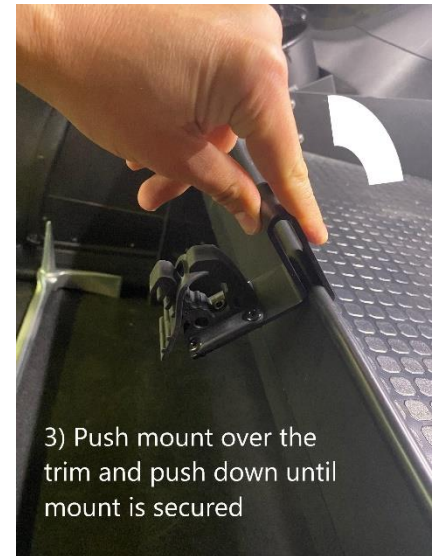
2 – Snap the bend over the trim



3 – Press down with thumb to the final position as bend goes over the lip of the tray

Questions or Feedback: Call 1-844-867-7299 or  
Email [sales@cargoraxx.com](mailto:sales@cargoraxx.com)

# Halligan Mount Installation



Questions or Feedback: Call 1-844-867-7299 or  
Email [sales@cargoraxx.com](mailto:sales@cargoraxx.com)