



S3A

2011-2020 TAHOE ASSEMBLY INSTRUCTIONS

Thank you for purchasing CargoRAXX. See attached assembly and installation instructions. Please attach both rear brackets onto the tray before inserting into vehicle, then attach the front two once in the vehicle. Mark hole locations carefully – there is little tolerance once the jacknuts are inserted. Carefully mark and drill 6 holes in the paneling before drilling the larger 13/32” hole for the jacknuts. **Please be careful to not over-torque your drill when tightening the jacknuts as the thread can be damaged.** Please reach out with any questions – I enclosed my card and my cell is 732-708-0077.

Best,

Roman Lesko
CargoRAXX

Thank you!
Roman Lesko

Questions or Feedback: Call 1-844-867-7299 or
Email sales@cargoraxx.com



CARGORAXX™

S3A – 2011-2020 CHEVROLET TAHOE

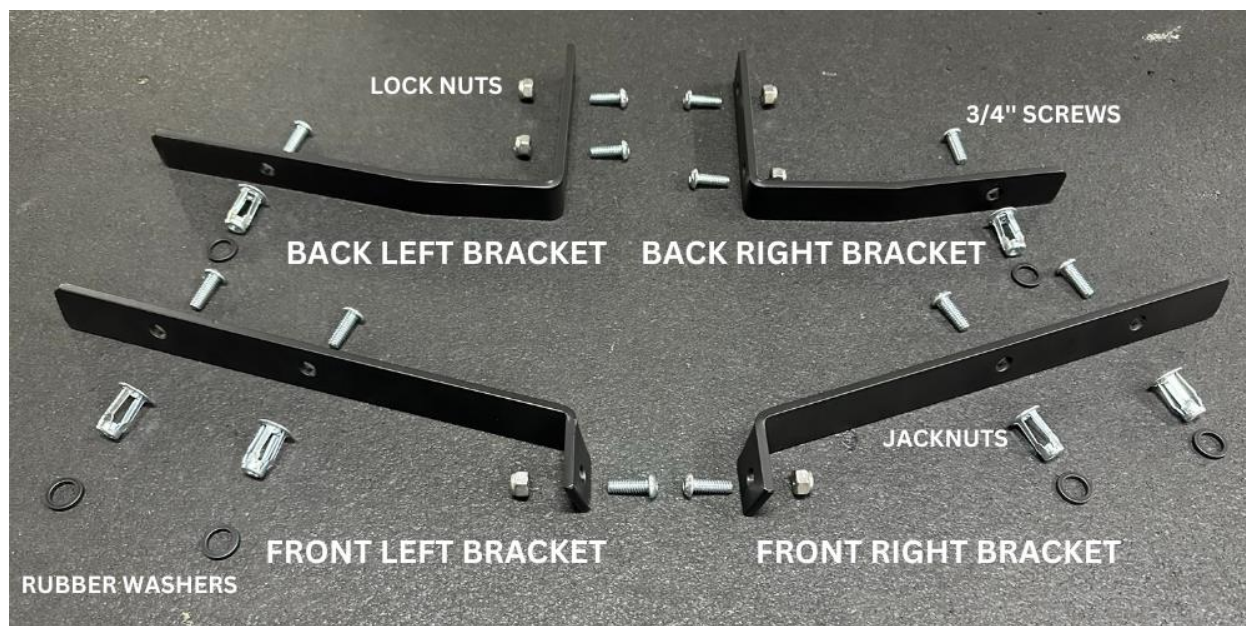
ASSEMBLY GUIDE



Questions or Feedback: Call 1-844-867-7299 or
Email sales@cargoraxx.com

STEP 1

Identify brackets – the front brackets are not interchangeable – make sure they tilt to go along with the paneling in the vehicle. Make sure the rear brackets line up with the proper hole locations.



STEP 2

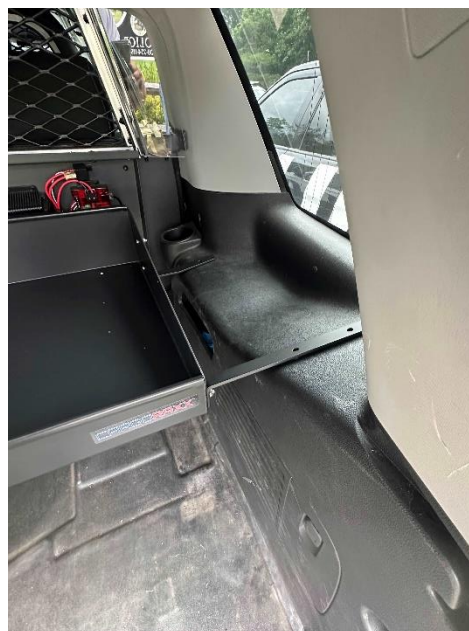
Attach both rear brackets to the tray before inserting into vehicle



Questions or Feedback: Call 1-844-867-7299 or
Email sales@cargoraxx.com

STEP 3

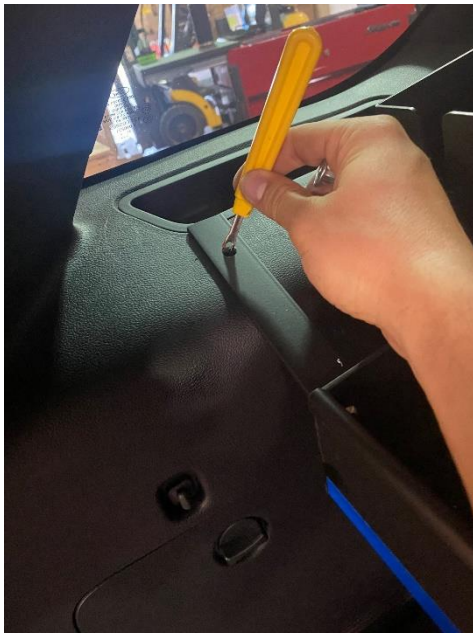
Insert rack into vehicle and attach the other two brackets. When placed in the right spots, mark where to drill holes. Make sure to drill in the correct spot otherwise the jacknuts will not line up with the brackets.



Questions or Feedback: Call 1-844-867-7299 or
Email sales@cargoraxx.com

STEP 4

Mark hole locations through bracket holes, move the tray a few inches, and drill $13/32''$ holes. All holes must be $13/32''$.



STEP 5

Fasten rivnut onto 1-1/2" bolt using friction wrench, attach black rubber washer to the rivnut.



STEP 6

Press the rivet into the hole in the panel with washer between panel and rivet - drill the bolt tightly while the rivet is inside the panel and friction wrench is pressed down on rivet insert. This will cause the rivet to collapse and leave a threaded insert. Once you can't tighten anymore, remove the bolt with the drill and you are left with the insert.



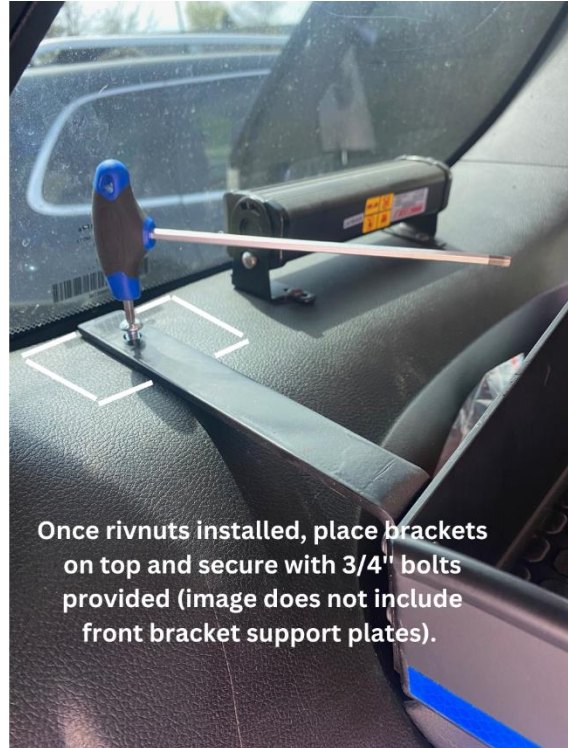
Questions or Feedback: Call 1-844-867-7299 or
Email sales@cargoraxx.com

STEP 7

Once you have all the rivet inserts secured, you can reinsert tray and tighten $\frac{3}{4}$ " bolts through the legs into the rivnuts. Installation is complete.



Completed Rivet



Once rivnuts installed, place brackets on top and secure with $\frac{3}{4}$ " bolts provided (image does not include front bracket support plates).

STEP 7

Insert rubber mat – glossy side up



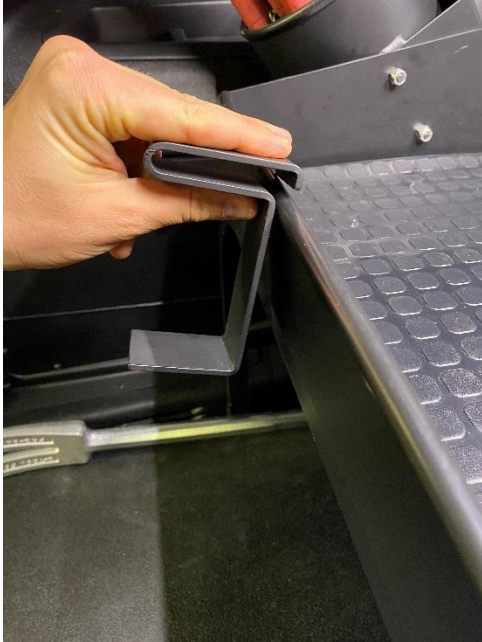
Flare Box Installation

Attach flare box using black oxide screws and lock nuts.



Questions or Feedback: Call 1-844-867-7299 or
Email sales@cargoraxx.com

Caution Tape Holder Installation



1 – Face caution tape holder down



2 – Snap the bend over the trim



3 – Press down with thumb to the final position as bend goes over the lip of the tray

Questions or Feedback: Call 1-844-867-7299 or
Email sales@cargoraxx.com

Halligan Mount Installation



Questions or Feedback: Call 1-844-867-7299 or Email sales@cargoraxx.com